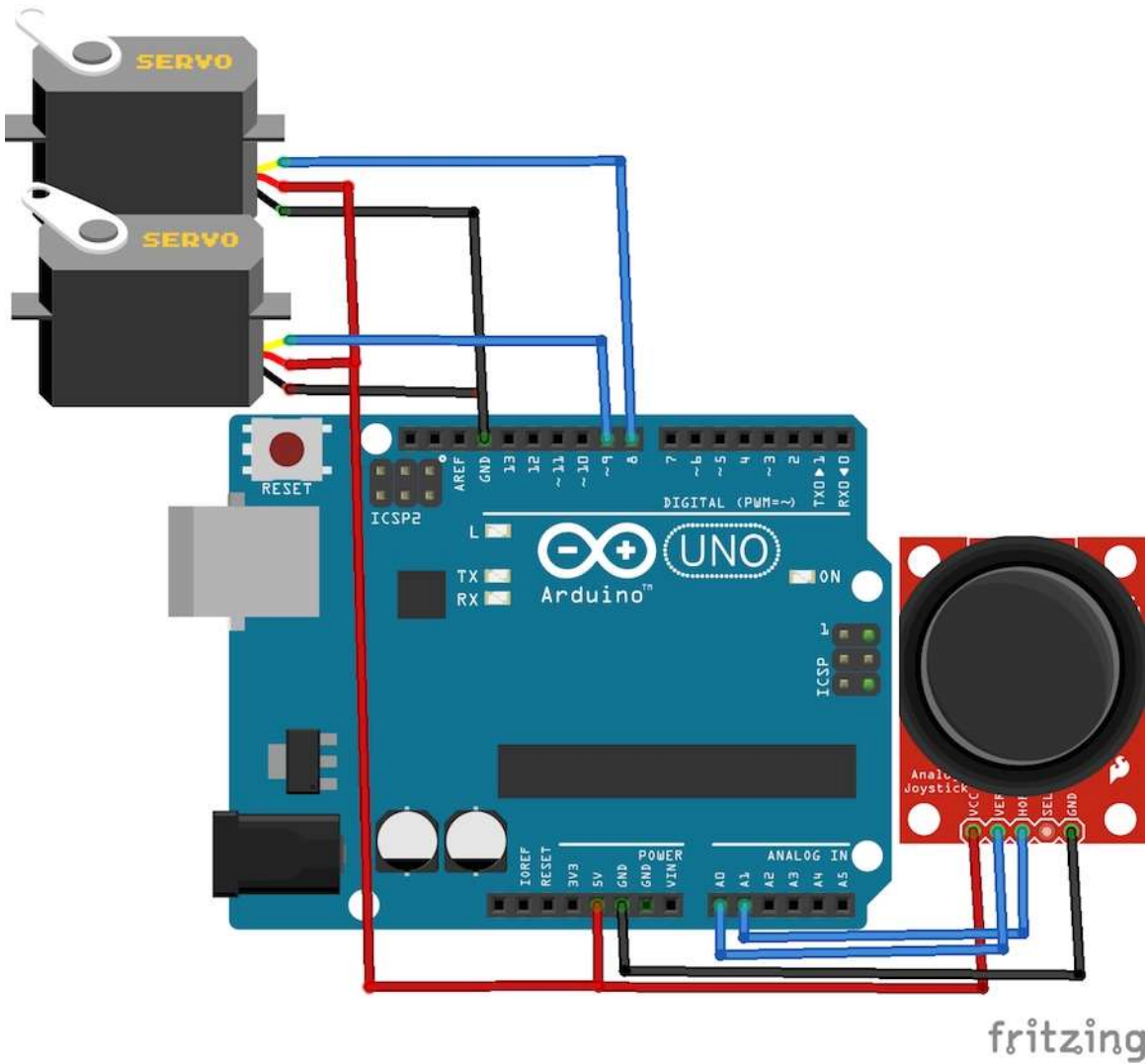


Joystick met 2 servo's

Het schema



De code

```
#include
Servo servo1;
Servo servo2;
int x_key = A1;
int y_key = A0;
int x_pos;
int y_pos;
int servo1_pin = 8;
int servo2_pin = 9;
int initial_position = 90;
int initial_position1 = 90;

void setup ( ) {
  Serial.begin (9600) ;
  servo1.attach (servo1_pin ) ;
  servo2.attach (servo2_pin ) ;
  servo1.write (initial_position);
  servo2.write (initial_position1);
  pinMode (x_key, INPUT) ;
  pinMode (y_key, INPUT) ;
}

void loop ( ) {
  x_pos = analogRead (x_key) ;
  y_pos = analogRead (y_key) ;

  if (x_pos < 300){
    if (initial_position < 10) { } else{ initial_position = initial_position - 20;
servo1.write ( initial_position ) ; delay (100) ; } } if (x_pos > 700){
  if (initial_position > 180)
  {
  }
  else{
    initial_position = initial_position + 20;
    servo1.write ( initial_position ) ;
    delay (100) ;
  }
}

if (y_pos < 300){
  if (initial_position1 < 10) { } else{ initial_position1 = initial_position1 -
20; servo2.write ( initial_position1 ) ; delay (100) ; } } if (y_pos > 700){
  if (initial_position1 > 180)
  {
  }
  else{
    initial_position1 = initial_position1 + 20;
    servo2.write ( initial_position1 ) ;
    delay (100) ;
  }
}
}
```